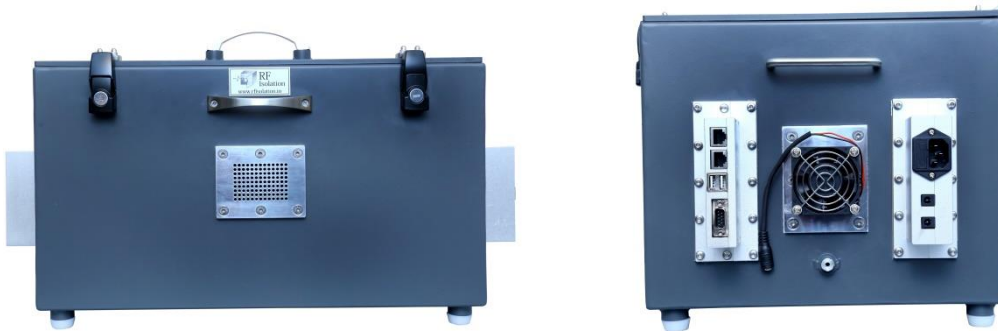


# DATA SHEET

**Model Name : RI 4826-T RF SHIELD BOX**

## **Features :**

- Rack Mountable / Table Top
- Rugged Aluminium Welded Box
- Fully Customizable Shielded Enclosure
- User Defined I/O Connector
- Tight Locking and Gasket System
- Copper Beryllium fingers are provided for ensuring Shielding Effectiveness.
- Powered by AC / DC Power Filter Lines.
- Honeycomb Ventilation for Cooling.



## **Specification:**

- Exterior : 480 mm(W) X 260 mm(H) X 330 mm(D)
- Interior : 440 mm(W) X 220 mm(H) X 290 mm(D)
- Frequency Range : 20 MHz to 6 GHz
- Isolation:  $\geq 125\text{dB @ } 1\text{GHz}$   
 $> 120\text{dB @ } 3\text{GHz}$   
 $> 90\text{ dB @ } 6\text{GHz}$
- Rack Mountable / Table Top / Trolley Based

## **Application**

- Ideal for 802.11a , b, g, n, ac.
- Bluetooth , Wi-Fi , 4G , 5G Device Testing , RFID Device Testing ,
- R & D